

NDRC Project Information Sheet

Submission Deadline; July 10, 2015, Project Information can be submitted on line at CA-NDRC@hcd.ca.gov or mailed to Tuolumne County Administrator's Office (2 South Green Street, Sonora, CA 95370)

1. Agency/Organization Project Sponsor:

2. Project Contact (Name, Email, Phone #):

3. Scope of Proposed Project- Include Project Goals and Objectives, Timeline and Tasks (Please submit as an attachment, **1 page max**)

4. List all Agency/Organizations involved in Project and their Role:

5. List Measure(s) of Project Accomplishments/Expected Outcomes:

6. How does this Project meet the resilient recovery objectives outlined in the NDRC grant application?:

7. What is the target area for the project (i.e., where is it located, who are beneficiaries, etc)?:

8. Has this project undergone environmental review? If yes, what stage is it in?

9. NDRC Application Budget Request (please attach a detailed project budget):

10. What guarantees are in place to insure the success of implementing this project?

11. How will this project be sustainable after implementation?

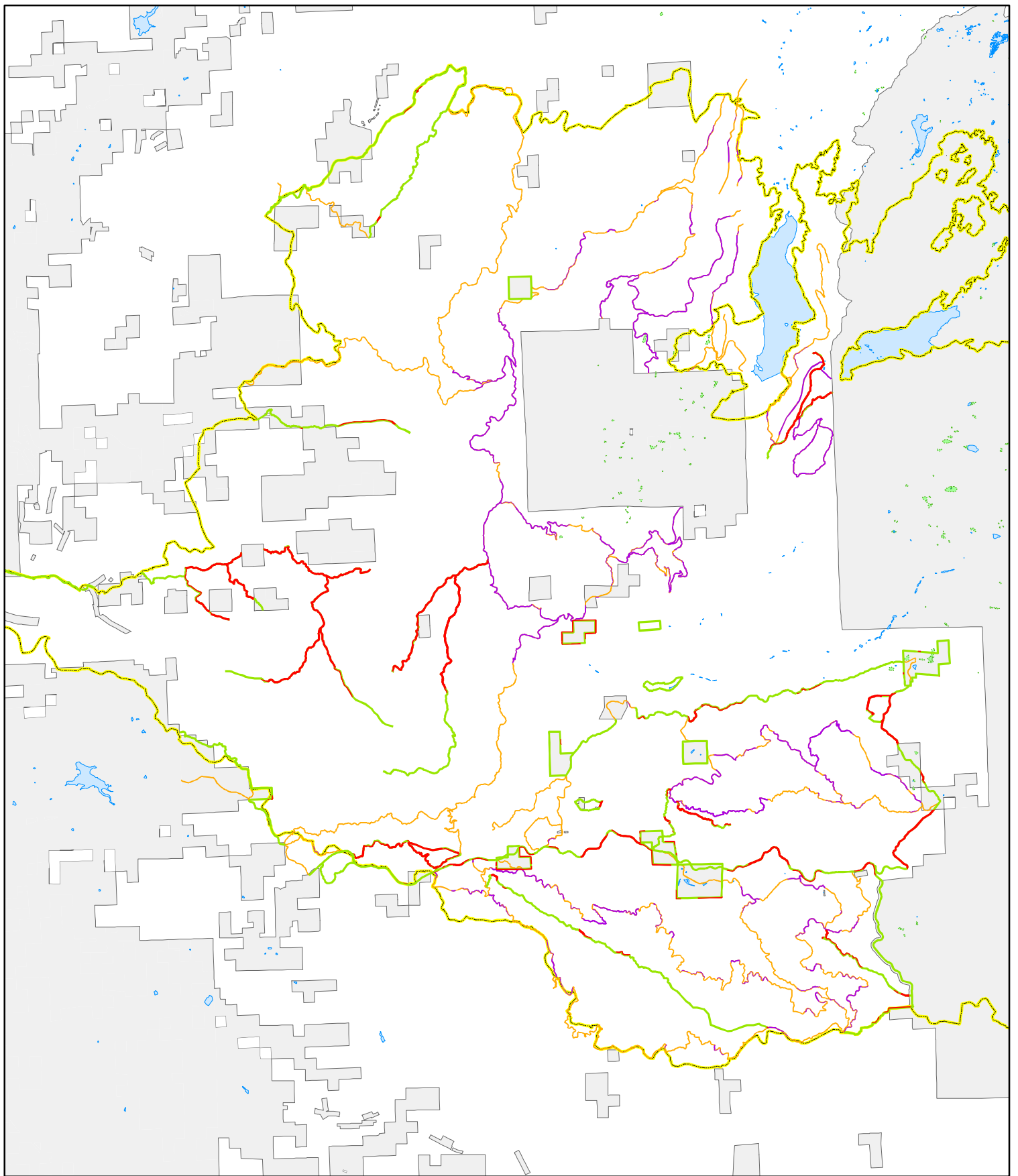
NDRC Committee Use Only:

EVALUATION CRITERIA: Meets National Objective Eligible Activity Meets Overall Benefit Requirement
 Within Target Area Ties Back to Disaster Incorporates Resilience
 Meets Cost Benefit Analysis Objectives

WORKING GROUP: Forest Infrastructure Public Facilities/Public Services

Cost Estimate

Fuelbreaks approved by NEPA	1614 ac.	\$1,614,000
Travel Routes approved by NEPA	1588 ac.	\$1,588,000
Totals	3202 ac.	\$3,202,000



7.5 3.75 0 7.5 Miles

Legend

- █ Fuelbreak_NEPA_approved
- █ TravelRoute_NEPA_approved
- █ Future_Fuelbreaks_NoNEPA
- █ Future_TravelRoutes_NoNEPA
- Rim_CASTF2857_FinalPerimeter

Stanislaus N.F. Proposed Rim Fuelbreaks 8/10/15

